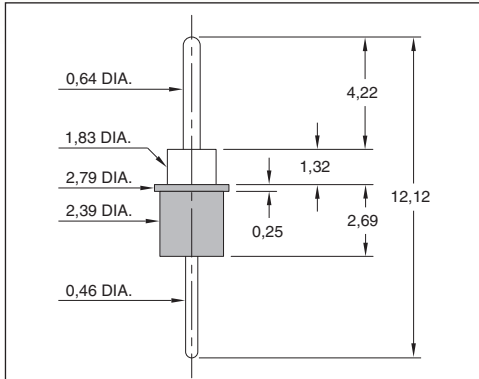
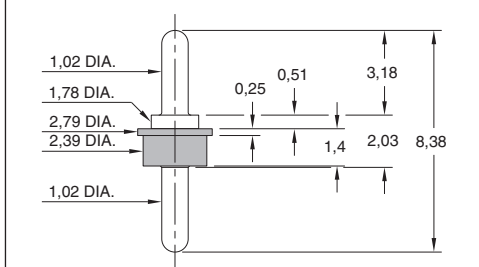


# INTERCONNECTS

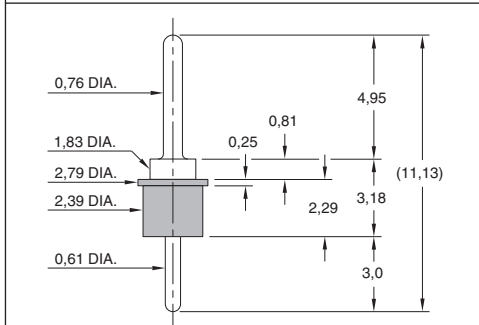
## SERIES 302, 330, 370, 380 DISCRETE INSULATED PINS



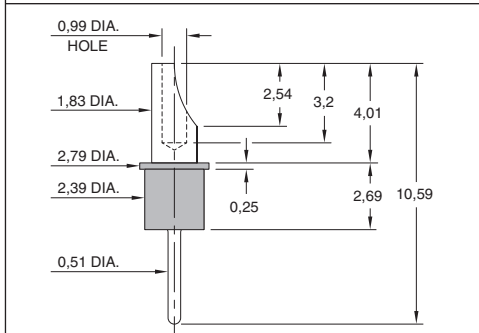
**FIG. 1**



**FIG. 2**



**FIG. 3**



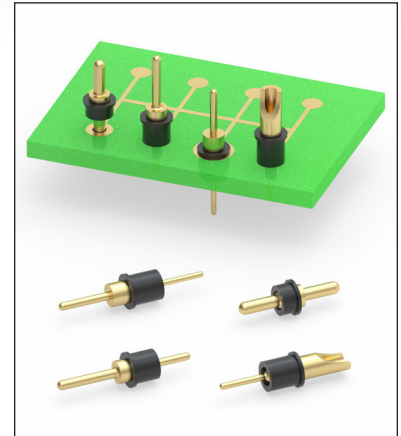
**FIG. 4**

- Series 302, 330, 370 and 380 insulated parts are offered in double tail & solder cup styles

302-10-001-00-900800 uses pin #0290-0  
 330-10-001-00-770800 uses pin #3077-0  
 370-10-001-00-070800 uses pin #7007-0  
 380-10-001-00-000800 uses pin #8000-0  
 See pages 162, 165, 215 and 216 for details

- Insulated terminals are used to electrically isolate single pin interconnects in an assembly. The plastic sleeve provides insulation of the terminal from nearby conductive components or for applications such as mounting through a metal panel or other non-insulated housing. The sleeve also facilitates the handling of small, individual terminals and can provide mechanical support for pins mounted on or through printed circuit boards

- Insulators are high temperature thermoplastic, suitable for most soldering operations



### ORDERING INFORMATION

<b>FIG. 1</b>	<b>Series 302...900800</b>	<b>Double tail Pin with Sleeve</b>
	302-10-001-00-900800	
<b>FIG. 2</b>	<b>Series 330...770800</b>	<b>Double tail Pin with Sleeve</b>
	330-10-001-00-770800	
<b>FIG. 3</b>	<b>Series 370...070800</b>	<b>Double tail Pin with Sleeve</b>
	370-10-001-00-070800	
<b>FIG. 4</b>	<b>Series 380...000800</b>	<b>Soldercup pin with Sleeve</b>
	380-10-001-00-000800	

### SPECIFICATIONS:

**Insulating Sleeve tolerance:**  $\pm 0,76$

**Packaging:** Bulk



**XX=Plating Code**  
See Below

For  
Electrical, Mechanical  
& Environmental Data,  
See page 264

<b>SPECIFY PLATING CODE XX=</b>	10		
Pin Plating	0,25µm Au		

