

ATLANTIC VERSION TERMINATOR INTERFACE ADAPTER	PART NUMBER	REVISION	DESCRIPTION	FEED TYPE	CONVERT TO	PART NUMBERS REQUIRED					
	2151621-1	A	FINE CRIMP HEIGHT ADJUST	MECHANICAL	PNEUMATIC FEED	2119950-1	1338685-1	5-18022-5	2119641-1	2119799-1	2063440-1
	2151621-2	A	FINE CRIMP HEIGHT ADJUST	PNEUMATIC	SERVO LATCH PLATE	2119951-1	-	8-2151621-5	1901094-3	-	2168400-6 (QUANTITY 2)
					SMART APPLICATOR	2161326-1	-	8-2151621-4	-	-	
					MECHANICAL FEED	2119949-1	1338685-1	5-18022-5	2119653-1	-	-
	2151621-5	A	FINE CRIMP HEIGHT ADJUST	SERVO LATCH PLATE	SERVO LATCH PLATE	2119951-1	-	8-2151621-5	1901094-3	-	2168400-6 (QUANTITY 2)
					SMART APPLICATOR	2161326-1	-	8-2151621-4	-	-	
					MECHANICAL FEED	2119949-1	1338685-1	5-18022-5	2119653-1	-	-
2151621-6	A	NON-CRIMP HEIGHT ADJUST	SERVO LATCH PLATE	-	-	-	-	-	-	-	
2151621-7	A	FINE CRIMP HEIGHT ADJUST	NONE	-	-	-	-	-	-	-	
7-2151621-7	A	CRIMP TOOLING KIT	-	-	-	-	-	-	-	-	

APPLICATOR DATA		
CRIMP WIRE	SIZE	TYPE
	3.05 mm [.120]	F
INSUL	0.00 mm [.000]	-

APPLICATOR INSTRUCTIONS 408-10389

TERMINAL DATA: TAI VUE TERMINAL		TE CRIMP SPECIFICATION	
TERMINAL NAME: TERMINAL			
WIRE STRIP LENGTH		INSULATION DIAMETER RANGE	
.171-.186 IN [4.34-4.72 mm]		Ø.120-.125 IN [3.05-3.18 mm]	
TERMINAL APPLICATION SPECIFICATION	NONE		
TERMINALS APPLIED			
TE TERMINAL	TAI VUE TERMINAL	TE TERMINAL	TAI VUE TERMINAL
2113254-1	21073-211PF		

WIRE SIZE	CRIMP HEIGHT INCH [mm]	CRIMP HEIGHT REFERENCE SETTING
22 AWG	1.83+/-0.05 [0.072+/-0.002]	8.4

- 1 RECOMMENDED SPARE PARTS
- 2 GREASE BEARING SURFACES LIGHTLY
- 3. LUBRICATE DAILY PER THE APPLICATOR INSTRUCTION SHEET SUPPLIED WITH THE APPLICATOR.
- 4 APPLICATOR SPECIFIC DATA TO BE ENTERED INTO BLANK MEMORY CHIP AT ASSEMBLY. SEE BELOW FOR PART NUMBER:
 MECHANICAL FEED WITH "SMART APPLICATOR" CONVERSION: 8-2151621-4
 PNEUMATIC FEED WITH "SMART APPLICATOR" CONVERSION: 8-2151621-4
 SERVO FEED WITH "FINE CRIMP HEIGHT ADJUST": 8-2151621-5
 SERVO FEED WITH "NON-CRIMP HEIGHT ADJUST": 8-2151621-6
- 5. ADJUSTMENT OF THE STRIPPER MAY BE REQUIRED WHEN MOVING THE APPLICATOR BETWEEN BENCH AND LEADMAKER APPLICATIONS.
- 6 APPLY PART NUMBER 1-23419-5 LOCTITE TO THREADS OF ITEM 50.
- 7 GREASE THREADS, GROOVE AND O-RING ON ITEMS 35 & 252.
- 8 MAGNET, ITEM 166 MUST BE ORIENTED CORRECTLY IN ORDER TO PROPERLY ACTUATE THE COUNTER.
- 9 CRIMP HEIGHT REFERENCE SETTING WAS THE SETTING USED WHEN THE APPLICATOR WAS QUALIFIED AT THE FACTORY. ADJUSTMENT MAY BE NECESSARY WHEN RUNNING APPLICATOR IN THE FIELD.
- 10 SPARE FEED CAM STORAGE LOCATION REFER TO INSTRUCTION SHEET FOR ADDITIONAL INFORMATION.
- 11 TO CONVERT THE APPLICATOR TO A NON-CARRIER CUTTING STYLE, REMOVE ITEM 13 AND ATTACH TO THE LOCATION ON THE BACK SIDE OF THE HOUSING. REFER TO INSTRUCTION SHEET FOR ADDITIONAL INFORMATION.
- 12 WHEN ASSEMBLING -6 NON-CRIMP HEIGHT ADJUST APPLICATOR USE SHIM PACK 2119957-2 TO ALIGN APPLICATOR'S MAXIMUM WIRE CRIMP HEIGHT AT NORMAL TERMINATOR SHUT HEIGHT

***WARNING**
 ON INSTALLATION, SET WIRE DISC, ITEM 40 TO LARGEST WIRE SIZE SETTING. USE OF SETTINGS BELOW MINIMUM REQUIRED CRIMP HEIGHT SETTING WILL CAUSE DAMAGE TO CRIMP TOOLING.

-77	-7	-6	-5	-2	-1	PART NO	DESCRIPTION	ITEM NO
-	-	1	-	-	-	2119957-2	APPLICATOR SHIM PACK	260
-	1	-	1	1	1	8-21084-0	O-RING, .676 ID, .070 DIA. MAT.	252

ATLANTIC VERSION
 Shown on sheets 1 of 4 & 2 of 4
 (Pacific version shown on sheets 3 of 4 & 4 of 4)

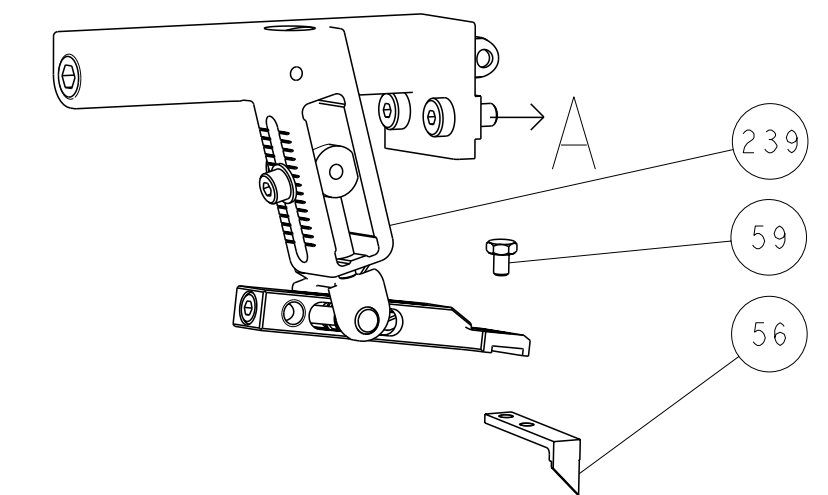
SET UP GAUGE	LOC	DIST	REVISIONS					
2119599-1	A	66	P	LTB	DESCRIPTION	DATE	DWN	APVD
			A		RELEASED	02MAY2012	KS	TE

REVISIONS										
P	LTB	DESCRIPTION	DATE	DWN	APVD					
-	-	-	-	1	-	2119640-1	PUSH ROD, AIR FEED			250
-	-	-	-	1	-	2079988-1	BUSHING, LCH5-12, MISUMI			249
-	-	-	-	1	-	2119641-1	FEED CAM, AIR FEED			248
-	1	-	1	1	1	2119798-1	DETENT PIN			247
-	1	-	1	1	1	1-22279-3	SPRING, COMPRESSION			246
-	-	1	-	-	-	2119758-1	RAM, AMP STYLE, SIDE FEED, NON-ADJ.			245
-	1	1	1	1	1	18023-1	SCR, SKT HD CAP M3 X 5.0			241
-	-	2	2	-	-	2168400-6	SHCS, LOW HEAD, RoHS, M5 X 16			240
-	-	-	-	-	1	2119580-1	MECHANICAL FEED ASSEMBLY			239
-	-	-	-	1	-	2063440-1	AIR FEED MODULE			238
-	-	1	1	-	-	2119740-2	TAG, IDENTIFICATION			213
-	-	1	1	-	-	1901094-3	SPACER, FEEDER			198
-	1	1	1	1	1	993111-1	PIN, SLOTTED SPRING 3.0 X 20.0			177
-	1	1	1	1	1	8-22280-7	SPRING, COMPRESSION			176
-	1	1	1	1	1	1752353-2	GUIDE PIN, HOLDDOWN			175
-	1	1	1	1	1	1901680-2	GUIDE PIN, HOLDDOWN			174
-	-	-	-	2	-	21045-3	RING, RETAIN, EXTERN, 3/16 CRESCENT			172
-	1	1	1	1	1	994969-1	MAGNET, RARE EARTH HIGH ENERGY			166
-	REF	REF	REF	REF	REF	994970-2	COUNTER, MAGNETIC			164
-	-	-	-	1	-	240638-1	SPRING, FEED FINGER			163
-	-	-	-	1	-	3-23627-7	PIN, RETAIN, GRVD, 3/16 X .854			137
-	-	-	-	1	-	2119799-1	HOLDER, FEED FINGER, AF			136
-	-	REF	REF	-	-	SEE NOTE 4	MEMORY CHIP, PROGRAMMED			135
-	-	1	1	-	-	1633743-1	SERVO FEED LATCH ASM			133
-	-	REF	REF	-	-	2119944-1	FEED FINGER ASSEMBLY, SF			117
-	1	1	1	1	1	318563-1	GUARD, FRONT CHIP			89
-	1	1	1	1	1	455888-2	SPACER, CRIMPER			82
-	1	1	1	1	1	2119956-1	DOCUMENTATION PACKAGE			71
-	1	-	-	1	1	2119740-1	TAG, IDENTIFICATION			67
-	2	2	2	2	2	2168078-1	SCREW, DRIVE, RH, RoHS			66
-	1	-	1	1	1	2119793-1	LIMITER, ADJUSTMENT BOLT			63
-	3	-	3	3	3	992763-5	SCR, SET, SOC, CONE POINT, M3 x 4.0			62
-	1	1	1	1	1	2079383-4	SCR, BHSC, RoHS (M4 X 8)			60
-	-	-	-	1	1	5-18022-5	SCR, HEX HD CAP, M4 X 6.0			59
-	-	-	-	1	1	1338685-1	PAWL, FEED			56
-	4	4	4	4	4	2168400-1	SHCS, LOW HEAD, RoHS, M4 X 12			54
-	1	1	1	1	1	1-5018030-0	NUT, HEX, REG, RoHS, M3.5			52
-	1	1	1	1	1	1901681-1	HOLDDOWN, TERMINAL			51
-	1	1	1	1	1	1-1752354-2	STANDOFF, HOLD-DOWN			50
-	-	-	-	1	2	18023-9	SCR, SKT HD CAP M4 X 6.0			49
-	-	-	-	-	1	2119652-1	FEED CAM, PRE FEED			48
-	-	-	-	-	1	2119653-1	FEED CAM, POST FEED			47
-	1	1	1	1	1	2119656-9	APPLICATOR BASIC ASSEMBLY, SF			46
-	1	-	1	1	1	2119370-1	RAM, AMP STYLE, SIDE FEED			44
-	1	1	1	1	1	2079383-7	SCR, BHSC, RoHS (M8 X 25)			41
-	1	-	1	1	1	2119645-1	DISC, NUMBERED FA WIRE ADJUSTMENT			40
-	1	-	1	1	1	2119957-1	APPLICATOR SHIM PACK			39
-	1	1	1	1	1	2119644-2	RAM WASHER, PRECISION			38
-	1	1	1	1	1	2119085-1	FA HEAD, ATLANTIC STYLE			37
-	1	-	1	1	1	2119092-1	BOLT, ADJUSTMENT			35
-	1	1	1	1	1	1752356-2	SUPPORT, TERMINAL			34
-	2	2	2	2	2	2079383-5	SCR, BHSC, RoHS (M4 X 20)			33
-	1	1	1	1	1	2161328-1	HEX HEAD, FLANGED, M5 x 8mm LONG			32
-	1	1	1	1	1	1320908-2	SPACER, STRIP GUIDE			30
-	1	1	1	1	1	2119959-1	ASSEMBLY, STRIP GUIDE			29
-	1	1	1	1	1	1-455888-0	SPACER, CRIMPER			28
-	1	1	1	1	1	1320928-2	PLATE, STRIP GUIDE			24
-	1	1	1	1	1	2168083-2	SCR, SKT HD CAP, RoHS, M4 X 8.0			21
-	1	1	1	1	1	1-18028-2	WASHER, FLAT, REG M4			20
-	1	1	1	1	1	2119533-1	STRIPPER, SIDE FEED			19
-	1	1	1	1	1	2119806-1	INSERT, SHEAR			13
-	1	1	1	1	1	3-22280-3	SPRING, COMPRESSION			12
-	1	1	1	1	1	1-356885-4	STOP, SHEAR			11
-	1	1	1	1	1	2119805-1	SHEAR HOLDER, FRONT			10
-	1	1	1	1	1	454276-5	FLOATING SHEAR, FRONT			9
-	1	1	1	1	1	1633933-3	ANVIL, COMBINATION			8
-	-	-	-	-	-	-	-			7
-	-	-	-	-	-	-	-			6
-	1	1	1	1	1	2119757-4	DEPRESSOR, SHEAR			5
-	-	-	-	-	-	-	-			4
-	-	-	-	-	-	-	-			3
-	-	-	-	-	-	-	-			2
-	1	1	1	1	1	456409-5	CRIMPER, WIRE .120 "F" PREMIUM			1

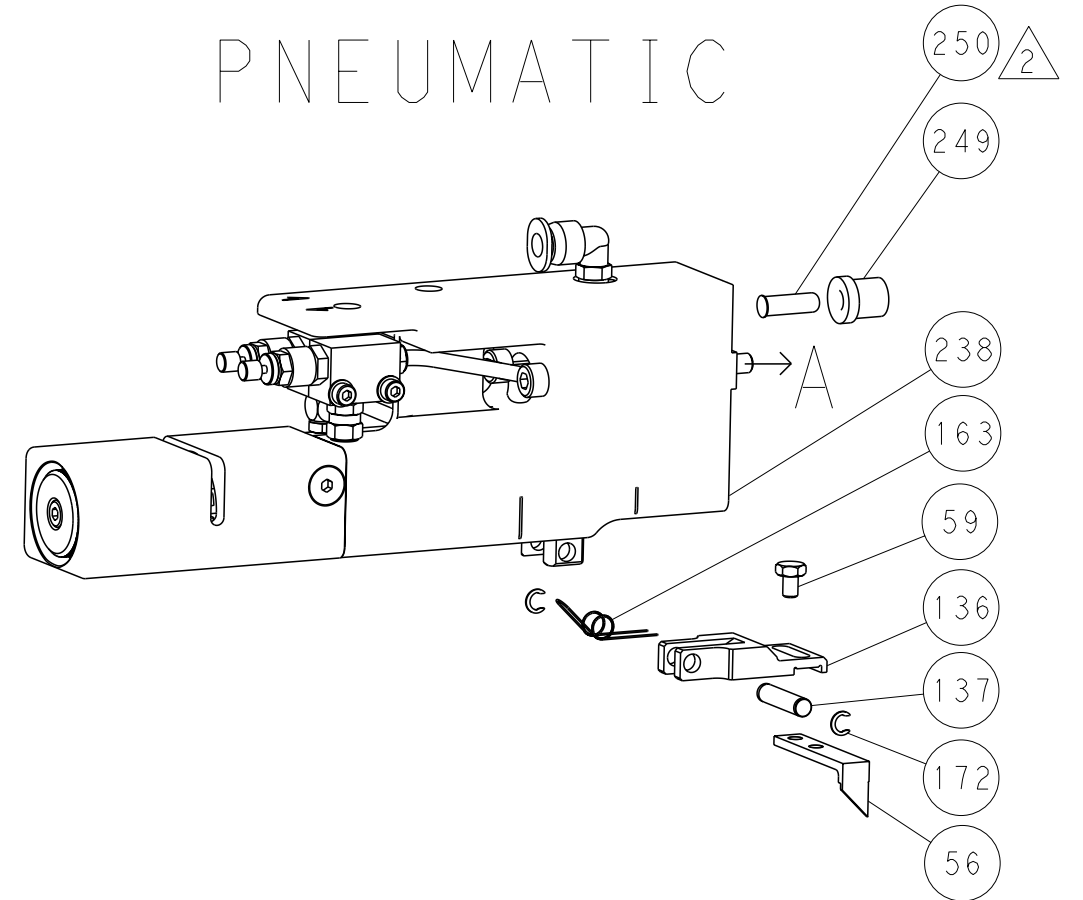
DIMENSIONS:		TOLERANCES UNLESS OTHERWISE SPECIFIED:		MATERIAL:		FINISH:		WEIGHT:		CUSTOMER ACCESSIBLE PRODUCTION DRAWING	
mm	9 PLC	±		AL							
	1 PLC	±0.1									
	2 PLC	±0.02									
	3 PLC	±0.005									
	4 PLC	±0.0005									
	ANGLES	±									

LOC		DIST		REVISIONS			
A	66	P	LTR	DESCRIPTION	DATE	DWN	APVD
				SEE SHEET 1			

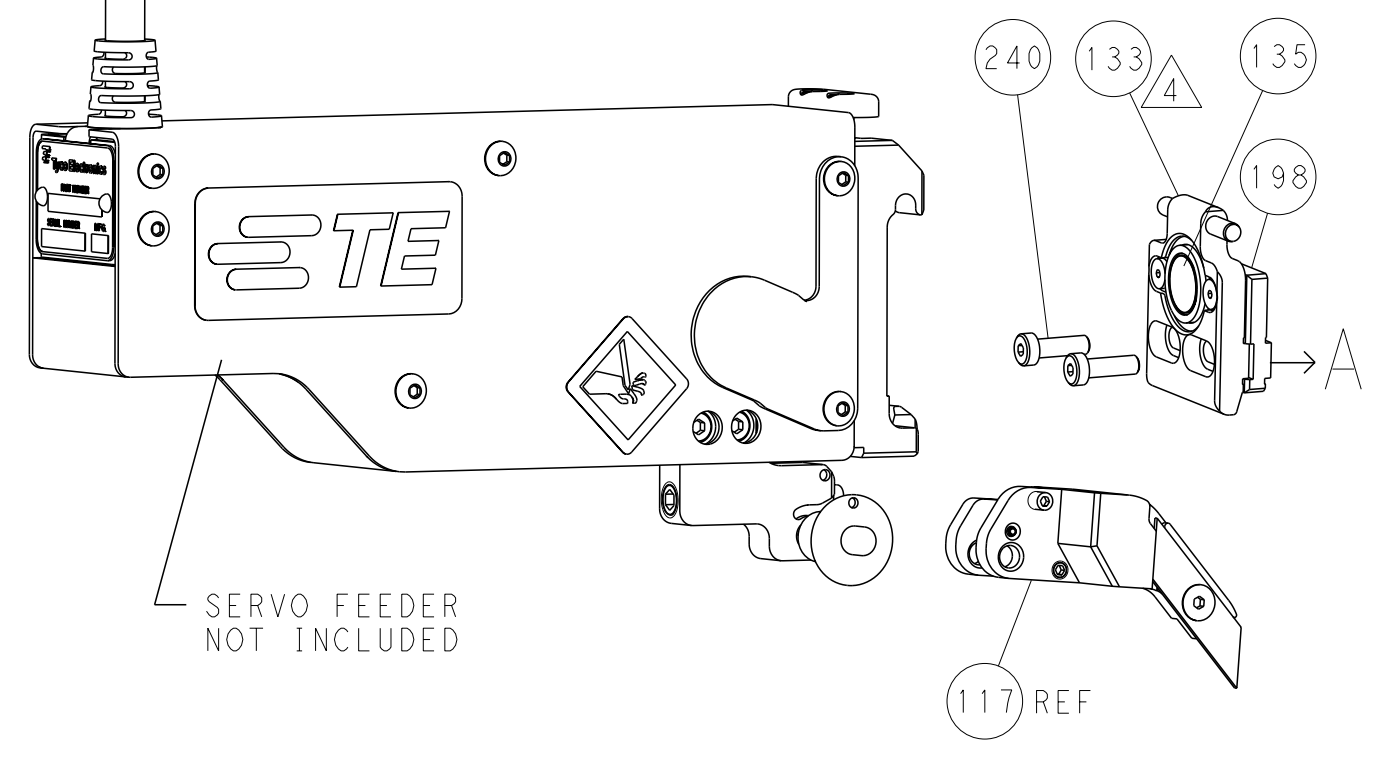
FEED TYPE MECHANICAL



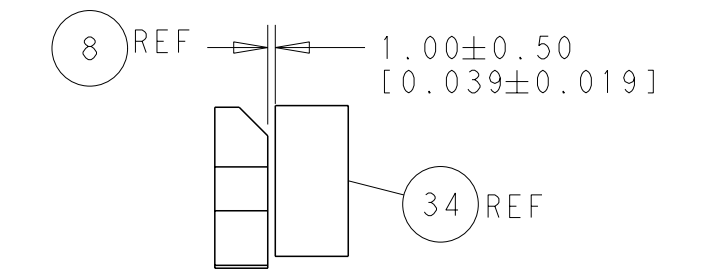
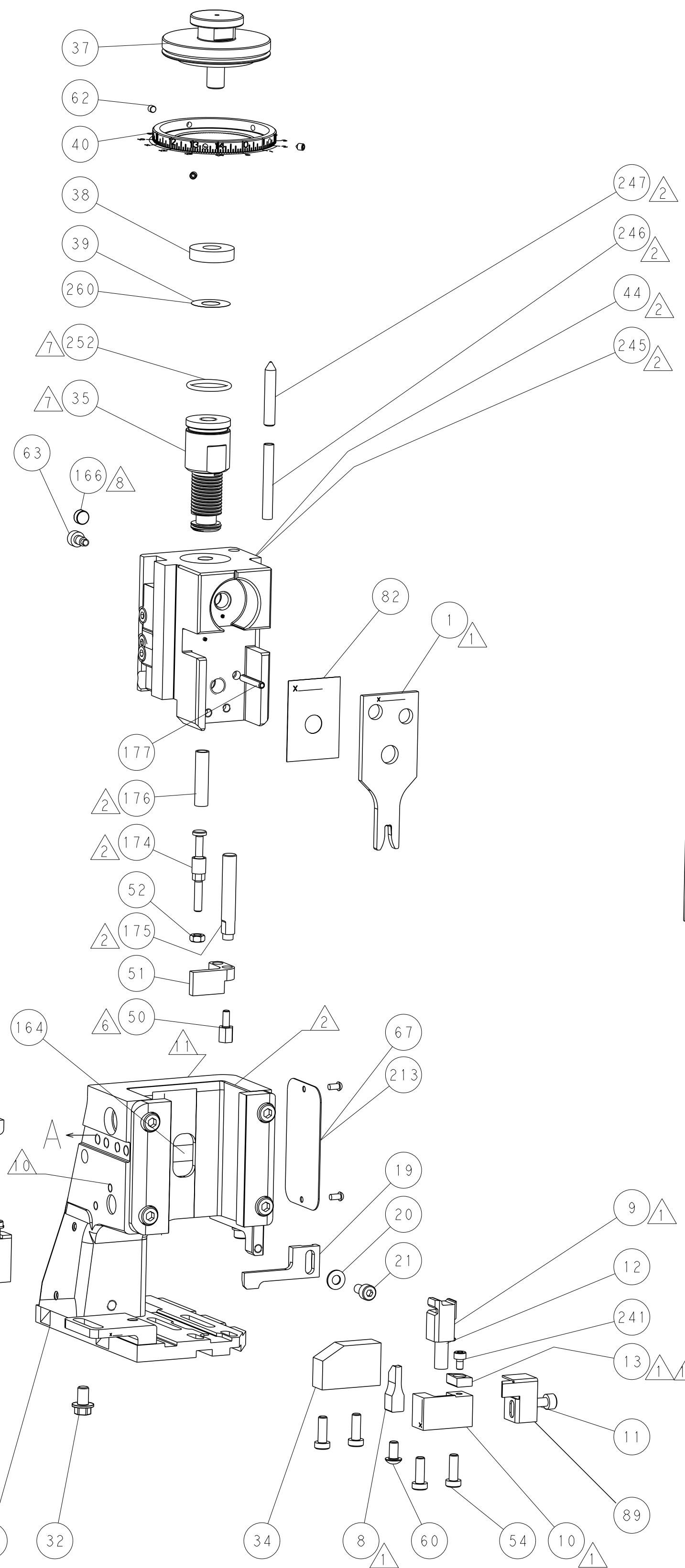
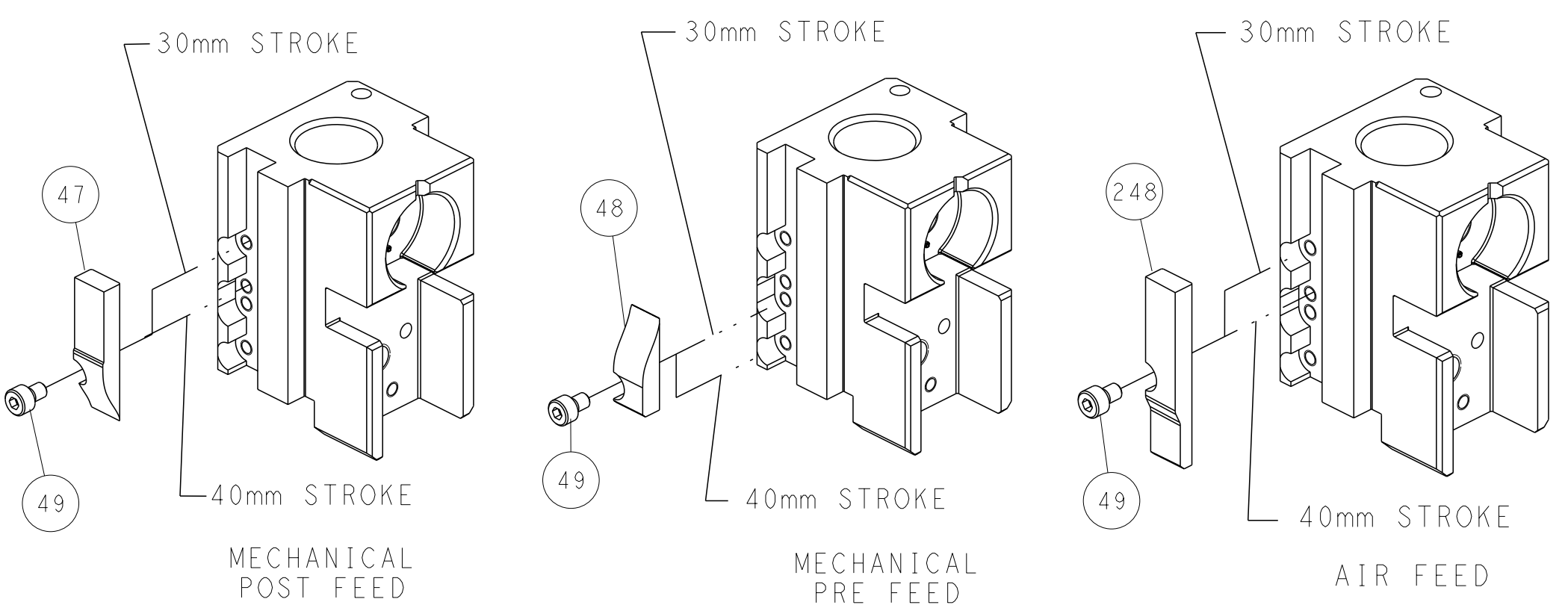
PNEUMATIC



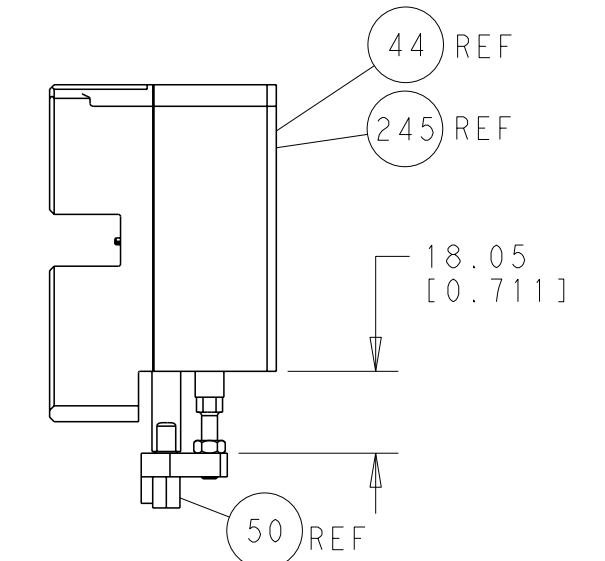
SERVO LATCH PLATE



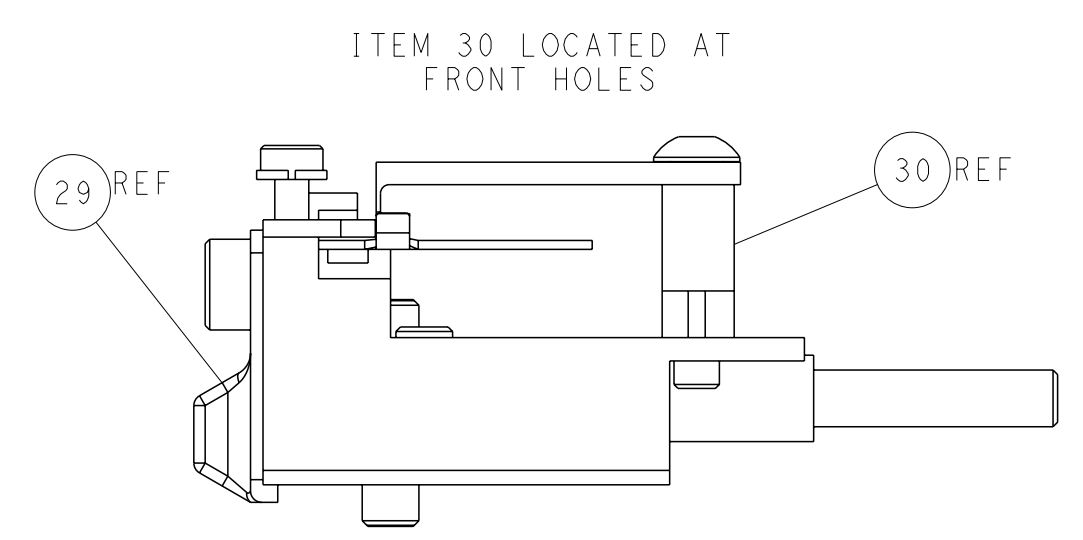
CAM POSITIONS



TERMINAL SUPPORT LOCATION



HOLDDOWN SET-UP



FEED TRACK POSITION GUIDE BY INSULATION BARREL

ATLANTIC VERSION
 Shown on sheets 1 of 4 & 2 of 4
 (Pacific version shown on sheets 3 of 4 & 4 of 4)

DIMENSIONS:		TOLERANCES UNLESS OTHERWISE SPECIFIED:		DWN: 12MARCH2012		TE Connectivity	
mm	9 PLC ±0.1	1 PLC ±0.1	2 PLC ±0.02	3 PLC ±0.02	4 PLC ±0.005	5 PLC ±0.005	Harrisburg, PA 17105-3608
	ANGLES ±0.0005						
MATERIAL:	FINISH:	WEIGHT:	SCALE:	SIZE:	CAGE CODE:	DRAWING NO:	RESTRICTED TO:
			1:1	A11	00779	©=2151621	
CUSTOMER ACCESSIBLE PRODUCTION DRAWING				SHEET 2 OF 4 REV A			

DIMENSIONING AND TOLERANCING PER ASME Y14.5M-2009

PACIFIC VERSION TERMINATOR INTERFACE ADAPTER	PART NUMBER	REVISION	DESCRIPTION	FEED TYPE	APPLICATOR STYLE CONVERSION CHART						
					CONVERT TO	PART NUMBERS REQUIRED					
	2-2151621-1	1	FINE CRIMP HEIGHT ADJUST	MECHANICAL	PNEUMATIC FEED	2119950-1	1338685-1	5-18022-5	2119641-2	2119799-1	2063440-1
					SERVO LATCH PLATE	2119951-1	-	8-2151621-5	1901094-3	-	2168400-6 (QUANTITY 2)
					SMART APPLICATOR	2161326-1	-	8-2151621-4	-	-	-
	2-2151621-2	1	FINE CRIMP HEIGHT ADJUST	PNEUMATIC	MECHANICAL FEED	2119949-1	1338685-1	5-18022-5	2119653-2	-	-
					SERVO LATCH PLATE	2119951-1	-	8-2151621-5	1901094-3	-	2168400-6 (QUANTITY 2)
					SMART APPLICATOR	2161326-1	-	8-2151621-4	-	-	-
	2-2151621-5	1	FINE CRIMP HEIGHT ADJUST	SERVO LATCH PLATE ⁴	MECHANICAL FEED	2119949-1	1338685-1	5-18022-5	2119653-2	-	-
					PNEUMATIC FEED	2119950-1	1338685-1	5-18022-5	2119641-2	2119799-1	2063440-1
	2-2151621-7	1	FINE CRIMP HEIGHT ADJUST	NONE	-	-	-	-	-	-	-
	7-2151621-7	1	CRIMP TOOLING KIT	-	-	-	-	-	-	-	-

APPLICATOR DATA		
CRIMP WIRE	SIZE	TYPE
	3.05 mm [1.20]	F
INSUL	0.00 mm [0.000]	-
APPLICATOR INSTRUCTIONS 408-10389		

TERMINAL DATA: TAI VUE TERMINAL		TE CRIMP SPECIFICATION	
TERMINAL NAME: TERMINAL			
WIRE STRIP LENGTH		INSULATION DIAMETER RANGE	
.171-.186 IN [4.34-4.72 mm]		∅.120-.125 IN [3.05-3.18 mm]	
TERMINAL APPLICATION SPECIFICATION	NONE		
TERMINALS APPLIED			
TE TERMINAL	TAI VUE TERMINAL	TE TERMINAL	TAI VUE TERMINAL
2113254-1	21073-211PF		

WIRE SIZE	CRIMP HEIGHT INCH [mm]	CRIMP HEIGHT REFERENCE SETTING
22 AWG	1.83+/-0.05 [0.072+/-0.002]	8.4

- RECOMMENDED SPARE PARTS
- GREASE BEARING SURFACES LIGHTLY
- 3. LUBRICATE DAILY PER THE APPLICATOR INSTRUCTION SHEET SUPPLIED WITH THE APPLICATOR.
- APPLICATOR SPECIFIC DATA TO BE ENTERED INTO BLANK MEMORY CHIP AT ASSEMBLY. SEE BELOW FOR PART NUMBER:
 MECHANICAL FEED WITH "SMART APPLICATOR" CONVERSION: 8-2151621-4
 PNEUMATIC FEED WITH "SMART APPLICATOR" CONVERSION: 8-2151621-4
 SERVO FEED WITH "FINE CRIMP HEIGHT ADJUST": 8-2151621-5
- 5. ADJUSTMENT OF THE STRIPPER MAY BE REQUIRED WHEN MOVING THE APPLICATOR BETWEEN BENCH AND LEADMAKER APPLICATIONS.
- APPLY PART NUMBER 1-23419-5 LOCTITE TO THREADS OF ITEM 50.
- GREASE THREADS, GROOVE AND O-RING ON ITEMS 139 & 152.
- MAGNET MUST BE ORIENTED CORRECTLY IN ORDER TO PROPERLY ACTUATE THE COUNTER.
- CRIMP HEIGHT REFERENCE SETTING WAS THE SETTING USED WHEN THE APPLICATOR WAS QUALIFIED AT THE FACTORY. ADJUSTMENT MAY BE NECESSARY WHEN RUNNING APPLICATOR IN THE FIELD.
- SPARE FEED CAM STORAGE LOCATION REFER TO INSTRUCTION SHEET FOR ADDITIONAL INFORMATION.
- TO CONVERT THE APPLICATOR TO A NON-CARRIER CUTTING STYLE, REMOVE ITEM 13 AND ATTACH TO THE LOCATION ON BACK SIDE OF THE HOUSING. REFER TO INSTRUCTION SHEET FOR ADDITIONAL INFORMATION.

***WARNING**
 ON INSTALLATION, SET WIRE DISC, ITEM 40 TO LARGEST WIRE SIZE SETTING. USE OF SETTINGS BELOW MINIMUM REQUIRED CRIMP HEIGHT SETTING WILL CAUSE DAMAGE TO CRIMP TOOLING.

-77	-27	-25	-22	-21	PART NO	DESCRIPTION	ITEM NO
-	1	1	1	1	2119782-1	FINE ADJUST HEAD ASM, PACIFIC STYLE	251

PACIFIC VERSION
 Shown on sheets 3 of 4 & 4 of 4
 (Atlantic version shown on sheets 1 of 4 & 2 of 4)

SET UP GAUGE	LOC	DIST	REVISIONS					
2119599-1	A	66	P	LTB	DESCRIPTION	DATE	DWN	APVD
			-	-	SEE SHEET 1	-	-	-

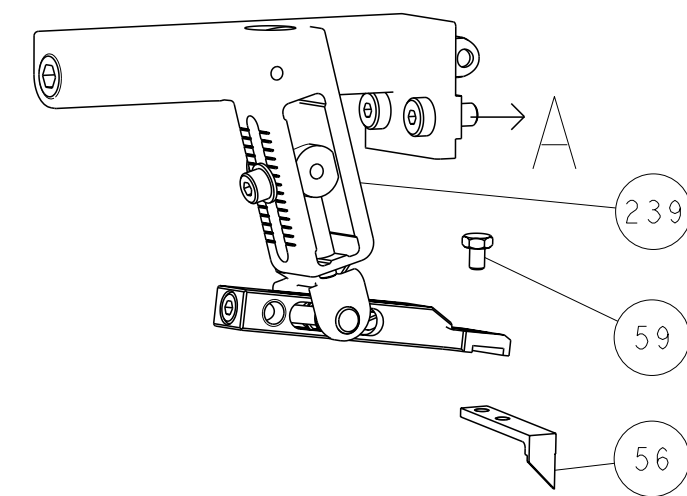
-	-	-	1	-	2119640-1	PUSH ROD, AIR FEED	250
-	-	-	1	-	2079988-1	BUSHING, LCH5-12, MISUMI	249
-	1	1	1	1	1-22279-3	SPRING, COMPRESSION	246
-	1	1	1	1	18023-1	SCR, SKT HD CAP M3 X 5.0	241
-	-	2	-	-	2168400-6	SHCS, LOW HEAD, RoHS, M5 X 16	240
-	-	-	-	1	2119580-1	MECHANICAL FEED ASSEMBLY	239
-	-	-	-	1	2063440-1	AIR FEED MODULE	238
-	-	1	-	-	2119740-2	TAG, IDENTIFICATION	213
-	-	1	-	-	1901094-3	SPACER, FEEDER	198
-	1	1	1	1	993111-1	PIN, SLOTTED SPRING 3.0 X 20.0	177
-	1	1	1	1	8-22280-7	SPRING, COMPRESSION	176
-	1	1	1	1	1752353-2	GUIDE PIN, HOLDDOWN	175
-	1	1	1	1	1901680-2	GUIDE PIN, HOLDDOWN	174
-	-	-	2	-	21045-3	RING, RETAIN, EXTERN, 3/16 CRESCENT	172
-	1	1	1	1	994969-1	MAGNET, RARE EARTH HIGH ENERGY	166
-	REF	REF	REF	REF	994970-2	COUNTER, MAGNETIC	164
-	-	-	1	-	240638-1	SPRING, FEED FINGER	163
-	1	1	1	1	8-21084-1	O-RING, .801 ID, .070 DIA, MAT.	152
-	-	-	1	-	2119641-2	FEED CAM, AIR FEED	151
-	1	1	1	1	2119798-2	DETENT PIN	145
-	1	1	1	1	2079383-8	SCR, BHSC, RoHS (M4 X 16)	144
-	2	2	2	2	2168400-5	SHCS, LOW HEAD, RoHS, M4 X 20	143
-	-	-	-	1	2119653-2	FEED CAM, POST FEED	142
-	1	1	1	1	1-2119656-0	APPLICATOR BASIC ASSEMBLY, SF	141
-	1	1	1	1	2119650-1	RAM, ASIAN STYLE, SIDE FEED	140
-	1	1	1	1	2119092-2	BOLT, ADJUSTMENT	139
-	-	-	1	-	3-23627-7	PIN, RETAIN, GRVD, 3/16 X .854	137
-	-	-	1	-	2119799-1	HOLDER, FEED FINGER, AF	136
-	-	REF	-	-	SEE NOTE 4	MEMORY CHIP, PROGRAMMED	135
-	-	1	-	-	1633743-1	SERVO FEED LATCH ASM	133
-	-	REF	-	-	2119944-1	FEED FINGER ASSEMBLY, SF	117
-	1	1	1	1	318563-1	GUARD, FRONT CHIP	89
-	1	1	1	1	455888-2	SPACER, CRIMPER	82
-	1	1	1	1	2119956-1	DOCUMENTATION PACKAGE	71
-	1	-	1	1	2119740-1	TAG, IDENTIFICATION	67
-	2	2	2	2	2168078-1	SCREW, DRIVE, RH, RoHS	66
-	1	1	1	1	2119793-1	LIMITER, ADJUSTMENT BOLT	63
-	3	3	3	3	992763-5	SCR, SET, SOC, CONE POINT, M3 x 4.0	62
-	-	-	1	1	5-18022-5	SCR, HEX HD CAP, M4 X 6.0	59
-	-	-	1	1	1338685-1	PAWL, FEED	56
-	2	2	2	2	2168400-5	SHCS, LOW HEAD, RoHS, M4 X 20	54
-	1	1	1	1	1-5018030-0	NUT, HEX, REG, RoHS, M3.5	52
-	1	1	1	1	1901681-1	HOLDDOWN, TERMINAL	51
-	1	1	1	1	1-1752354-2	STANDOFF, HOLD-DOWN	50
-	-	-	1	2	18023-9	SCR, SKT HD CAP M4 X 6.0	49
-	-	-	-	1	2119652-1	FEED CAM, PRE FEED	48
-	1	1	1	1	2079383-7	SCR, BHSC, RoHS (M8 X 25)	41
-	1	1	1	1	2119645-1	DISC, NUMBERED FA WIRE ADJUSTMENT	40
-	1	1	1	1	2119957-1	APPLICATOR SHIM PACK	39
-	1	1	1	1	2119644-2	RAM WASHER, PRECISION	38
-	1	1	1	1	1752356-2	SUPPORT, TERMINAL	34
-	2	2	2	2	2079383-5	SCR, BHSC, RoHS (M4 X 20)	33
-	1	1	1	1	2161328-1	HEX HEAD, FLANGED, M5 x 8mm LONG	32
-	1	1	1	1	1320908-2	SPACER, STRIP GUIDE	30
-	1	1	1	1	2119959-1	ASSEMBLY, STRIP GUIDE	29
-	1	1	1	1	1-455888-0	SPACER, CRIMPER	28
-	1	1	1	1	1320928-2	PLATE, STRIP GUIDE	24
-	1	1	1	1	2168083-2	SCR, SKT HD CAP, RoHS, M4 X 8.0	21
-	1	1	1	1	1-18028-2	WASHER, FLAT, REG M4	20
-	1	1	1	1	2119533-1	STRIPPER, SIDE FEED	19
-	1	1	1	1	2119806-1	INSERT, SHEAR	13
-	1	1	1	1	3-22280-3	SPRING, COMPRESSION	12
-	1	1	1	1	1-356885-4	STOP, SHEAR	11
-	1	1	1	1	2119805-1	SHEAR HOLDER, FRONT	10
-	1	1	1	1	454276-5	FLOATING SHEAR, FRONT	9
-	1	1	1	1	1633933-3	ANVIL, COMBINATION	8
-	-	-	-	-	-	-	7
-	-	-	-	-	-	-	6
-	1	1	1	1	2119757-4	DEPRESSOR, SHEAR	5
-	-	-	-	-	-	-	4
-	-	-	-	-	-	-	3
-	-	-	-	-	-	-	2
-	1	1	1	1	456409-5	CRIMPER, WIRE .120 "F" PREMIUM	1

DIMENSIONS:		TOLERANCES UNLESS OTHERWISE SPECIFIED:		DWG		REV	
mm	9 PLC ±.1	1 PLC ±0.1	2 PLC ±0.02	3 PLC ±0.005	4 PLC ±0.0005	ANGLES ±.0005	FINISH
MATERIAL				DATE		APVD	
FINISH				12MARCH2012		G. STAKEM	
WEIGHT				12MARCH2012		G. BAILEY	
CUSTOMER ACCESSIBLE PRODUCTION DRAWING				12MARCH2012		T. ELBIN	
SCALE				NAME		TE Connectivity	
1:1				Ocean Side Feed		Harrisburg, PA 17105-3608	
SHEET				PRODUCT SPEC		RESTRICTED TO	
3 OF 4				APPLICATION SPEC		-	
REV				SIZE		CAGE CODE	
A				A1		00779	
DRAWING NO				SCALE		1:1	
C=2151621				SHEET		3 OF 4	

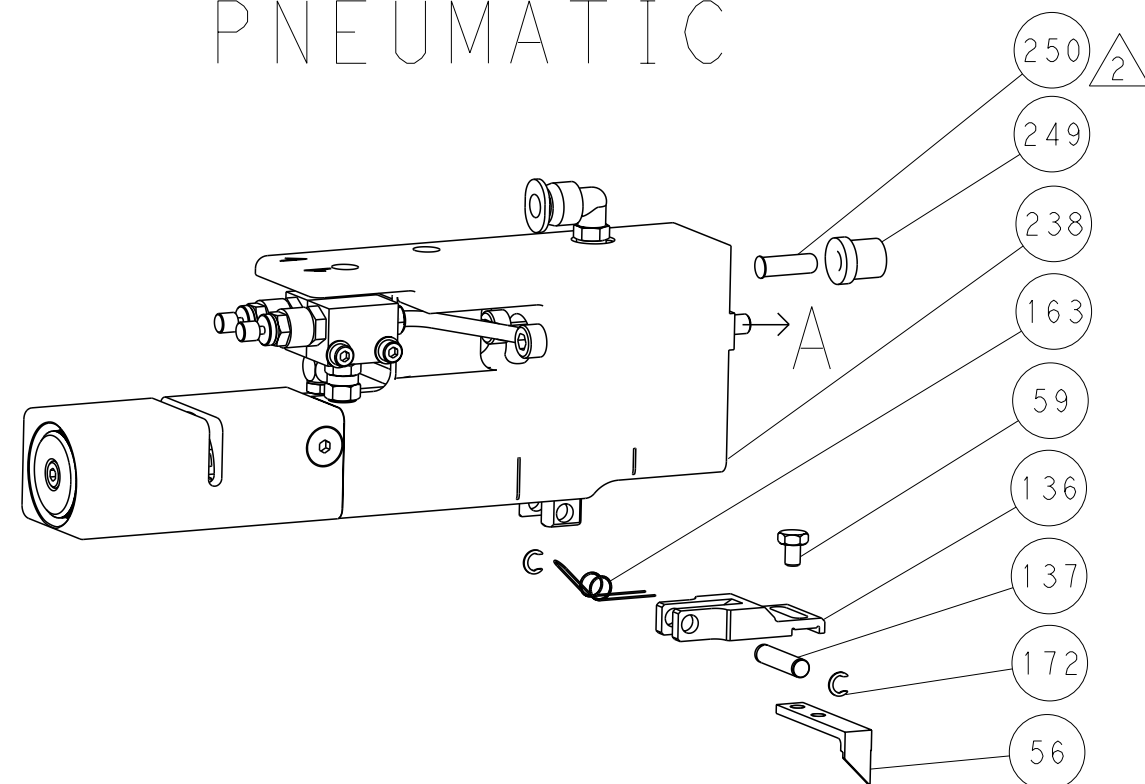
LOC	DIST	REV	DATE	BY	APPD
A	66				

DIMENSIONING AND TOLERANCING PER ASME Y14.5M-2009

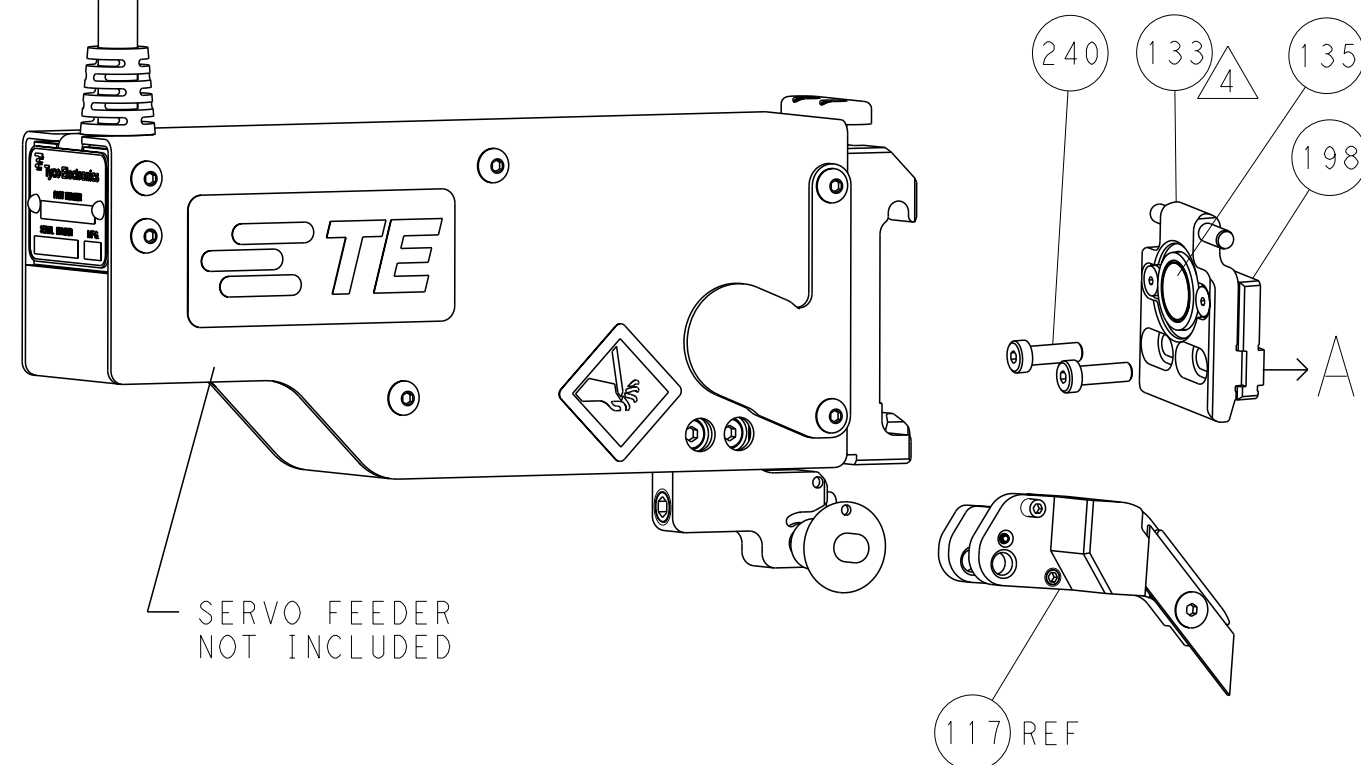
FEED TYPE MECHANICAL



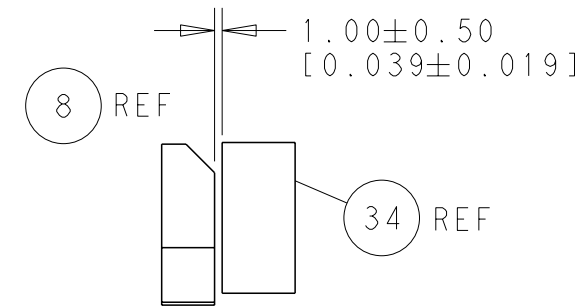
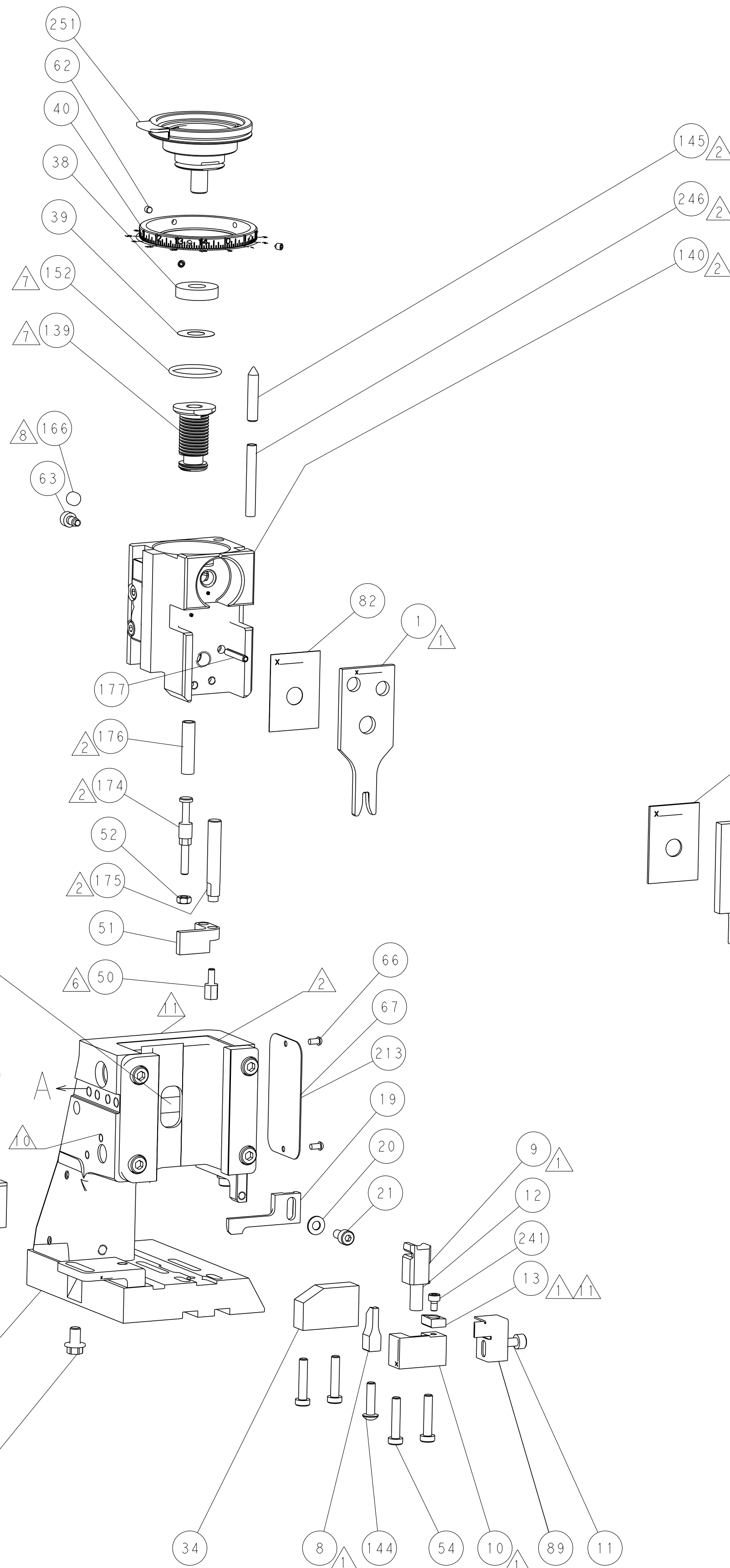
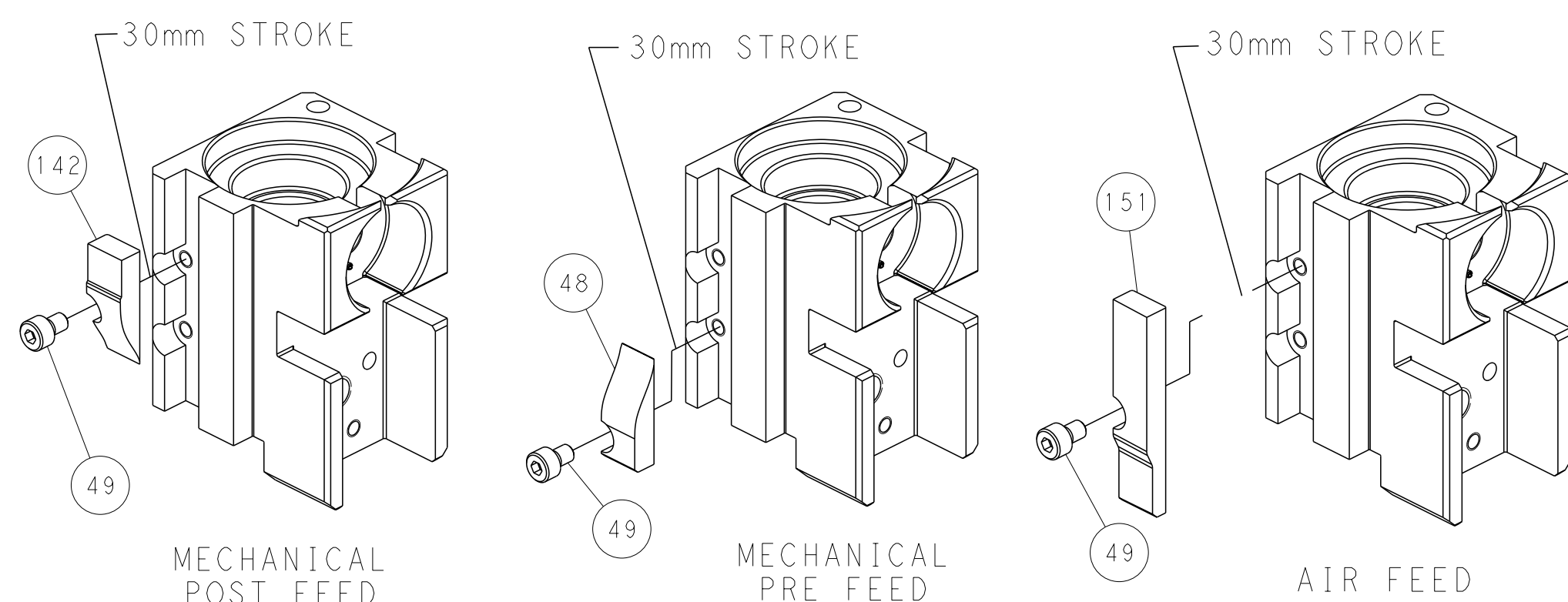
PNEUMATIC



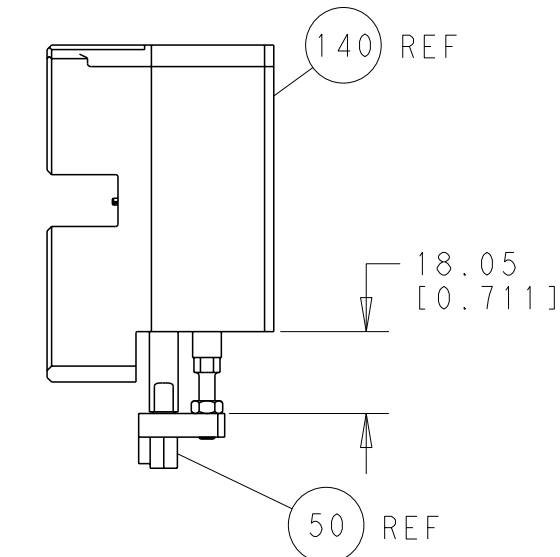
SERVO LATCH PLATE



CAM POSITIONS

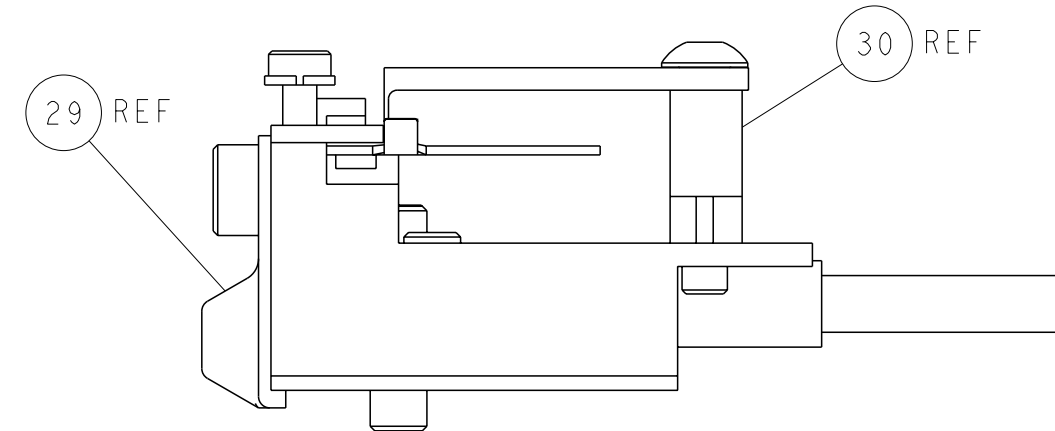


TERMINAL SUPPORT LOCATION



HOLDDOWN SET-UP

ITEM 30 LOCATED AT FRONT HOLES



FEED TRACK POSITION GUIDE BY INSULATION BARREL

PACIFIC VERSION
 Shown on sheets 3 of 4 & 4 of 4
 (Atlantic version shown on sheets 1 of 4 & 2 of 4)

<small>THIS DRAWING IS UNPUBLISHED. RELEASED FOR PUBLICATION. ALL RIGHTS RESERVED. THIS IS SUBJECT TO CHANGE WITHOUT NOTICE AND WITHOUT LIABILITY. DIMENSIONS AND TOLERANCES SHALL BE CONTACTED FOR THE LATEST POSITION.</small>		DWN: 12MARCH2012 CHK: G. BAILEY APVD: T. ELBIN	NAME: Ocean Side Feed Applicator SIZE: A CAGE CODE: 00779 DRAWING NO: C-2151621	RESTRICTED TO: A
DIMENSIONS: mm TOLERANCES UNLESS OTHERWISE SPECIFIED: 9 PLC ±0.1 1 PLC ±0.1 2 PLC ±0.02 3 PLC ±0.005 4 PLC ±0.005 ANGLES FINISH ±	PRODUCT SPEC: APPLICATION SPEC: WEIGHT: CUSTOMER ACCESSIBLE PRODUCTION DRAWING	DATE: 12MARCH2012 NAME: T. ELBIN SCALE: 1:1 SHEET: 4 OF 4 REV: A	TE Connectivity Harrisburg, PA 17105-3608	