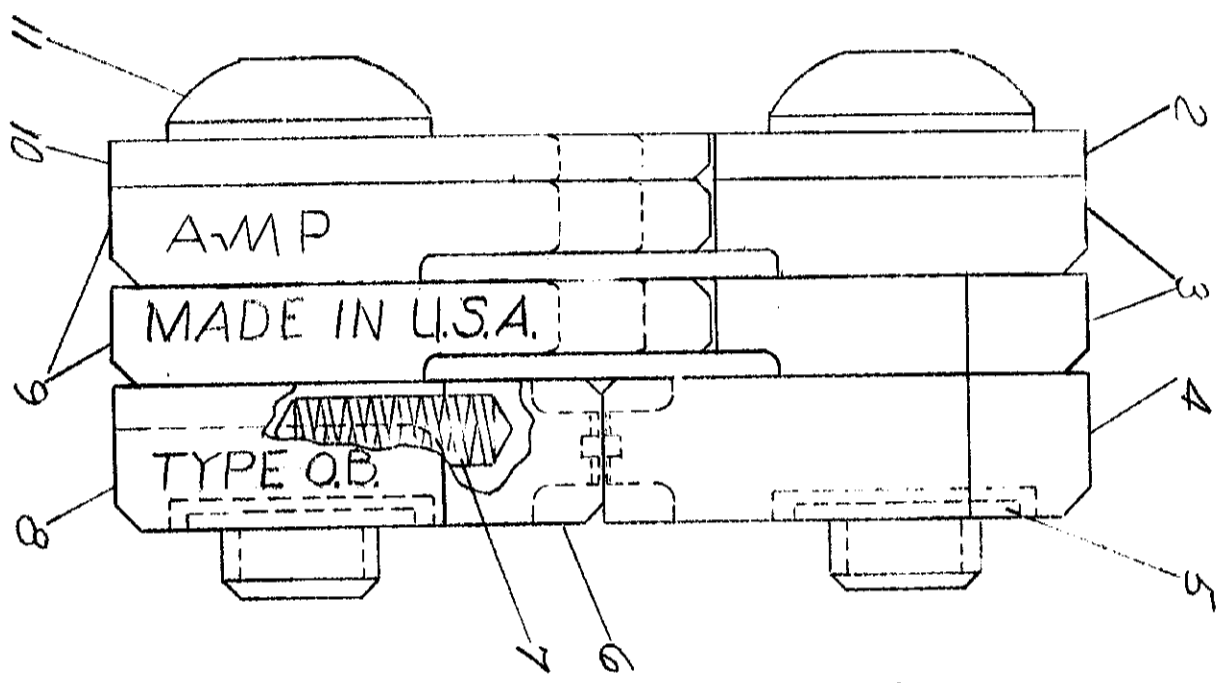
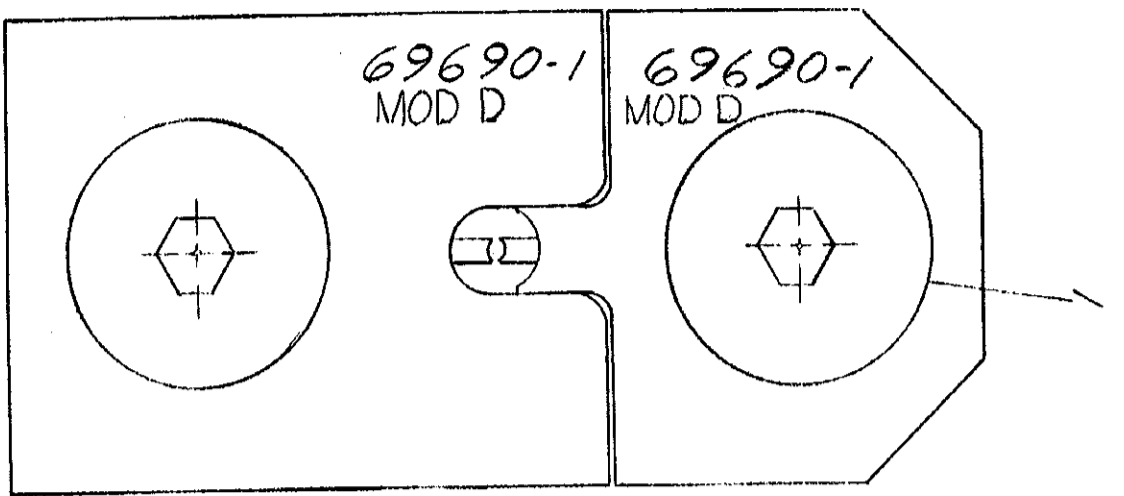


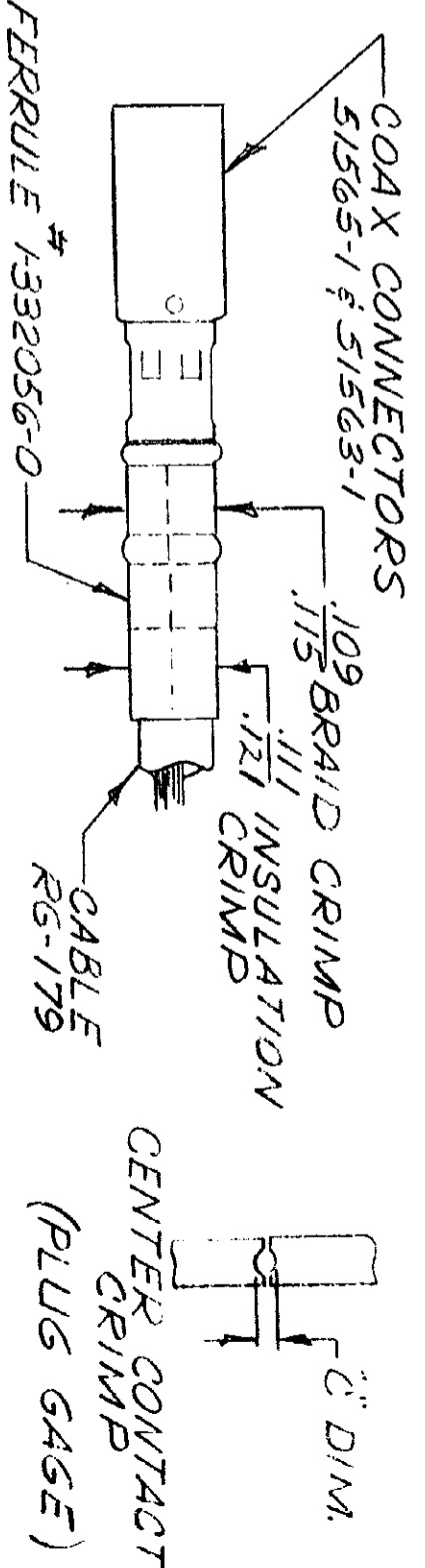
PRINT DIST
8

DIMENSIONS IN INCHES. DO NOT SCALE PRINT



"C" DIM	NO GO
GO	.013
	.017

METHOD OF GAGING CRIMP DIMENSIONS
THE CRIMP DIMENSIONS APPLY ONLY TO THE
ABOVE COMBINATIONS, ON A CRIMPED PRODUCT.



SUPERSEDED BY 1.5.2024.3

QTY	DESCRIPTION	QTY	DESCRIPTION	QTY	DESCRIPTION	QTY	DESCRIPTION
1	5-306105-4	1	SCREEN - SPECIAL	11			
1	306740-1	1	INDENTER-INSULATION	10			
2	306742	2	INDENTER-BRAID	9			
1	306543-1	1	BARREL-BLOCK	8			
2	305182	2	SPRING	7			
1	306544-8	1	INSERT-BARREL-LOWER	6			
2	1-21046-3	2	RING-RETAINING	5			
1	306738-2	1	INSERT-BARREL-UPPER	4			
2	306741	2	ANVIL-BRAID	3			
1	1-45923-2	1	ANVIL-INSULATION	2			
1	306105-9	1	SCREW-SPECIAL	1			

REVISION RECORD	DATE	CHK	DR
A REVISED	11-29-64	AF	PL
B REVISED	3-21-64	BS	BS
C REVISED	6-27-64	BS	BS
D REVISED	1-14-70	PL	PL
E REVISED	5-14-73	BS	BS
F REVISED	5-14-73	BS	BS
G REVISED	5-14-73	BS	BS
H REVISED	5-14-73	BS	BS
I REVISED	5-14-73	BS	BS
J REVISED	5-14-73	BS	BS
K REVISED	5-14-73	BS	BS
L REVISED	5-14-73	BS	BS
M REVISED	5-14-73	BS	BS
N REVISED	5-14-73	BS	BS
O REVISED	5-14-73	BS	BS
P REVISED	5-14-73	BS	BS
Q REVISED	5-14-73	BS	BS
R REVISED	5-14-73	BS	BS
S REVISED	5-14-73	BS	BS
T REVISED	5-14-73	BS	BS
U REVISED	5-14-73	BS	BS
V REVISED	5-14-73	BS	BS
W REVISED	5-14-73	BS	BS
X REVISED	5-14-73	BS	BS
Y REVISED	5-14-73	BS	BS
Z REVISED	5-14-73	BS	BS

REQUIRED PER ASSEMBLY

DESCRIPTION

NUMBER

1-06969

DR B. Stangheldt 1-28-66

DATE 2-1-66

SCALE 4-1

CLASS MIN COAX

TYPE M B 69690-1 D

REMARKS

CUSTOMER COPY REFERENCE ONLY

AMP INCORPORATED HARRISBURG, PENNA.

DIE ASSEMBLY MOD D