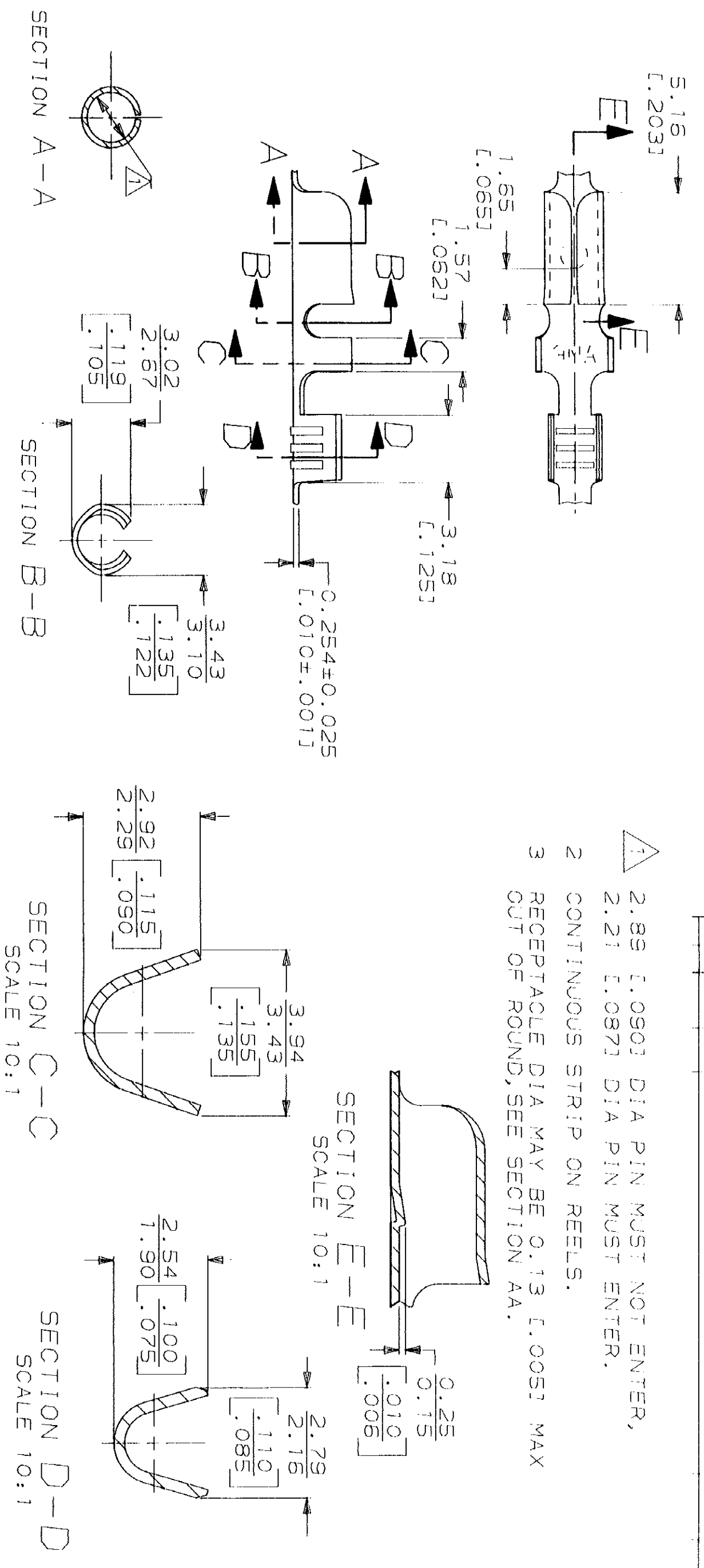


- 1 2.89 [.090] DIA PIN MUST NOT ENTER,
 2.21 [.087] DIA PIN MUST ENTER.
 2 CONTINUOUS STRIP ON REELS.
 3 RECEPTACLE DIA MAY BE 0.13 [.005] MAX
 OUT OF ROUND, SEE SECTION AA.



METRIOR

4.70 [.185]	F	1.78 [.070]	1.14 [.045]	0.8mm ² [.18]
STRIP LENGTH ±0.38 [±.015]	TYPE	WIDTH	±0.051 [.002]	WIRE
	WIRE BARREL CRIMP		0.99 [.039]	0.5mm ² [.20]
			0.91 [.036]	0.3mm ² [.22]

DO NOT SCALE PRINT. UNLESS SPECIFIED DIMENSIONS IN mm [INCHES] TOLERANCES ON: 2 PLC DEC ± 0.25 [.010] 3 PLC DEC ± ANGLES ±	DR 1/30/91 P FORNEY
MATERIAL #4 HARD BRASS	CHK 1/30/91 JR RUTH
FINISH	APPD 3/7/91 G YETTER
	APPD 3/7/91 R MEAVILL
	PRODUCT SPEC
	APPLICATION SPEC
	WEIGHT

0.3 - 0.8mm ² [22-18] AWG	60440-1
WIRE RANGE	PART NO
AMP	AMP Incorporated Harrisburg, PA 17105-3608
RECEPTACLE, PIN, 2.36 [.093] DIA	NAME
SIZE B	CAGE CODE
SCALE 5:1	DRAWING NO
	SHEET

CUSTOMER DRAWING