

C. Westby 5-21-92
APPROVED BY/DATE

REV 6

SAFETY ORGANIZATION(S)

THIS FILTER HAS BEEN FORMALLY RECOGNIZED, CERTIFIED OR APPROVED BY THE LISTED AGENCY. THEREFORE, ALL TEST/REQUIREMENTS SPECIFIED IN THE LATEST REVISION OF THE FOLLOWING AGENCY STANDARDS HAVE BEEN MET:

- UL RECOGNIZED
- UL 1289
- CSA CERTIFIED
- CSA 22.2, NO.0,0,4,8
- VDE APPROVED
- VDE 565-3
- SEV APPROVED
- SEV 1055/TP1977/5.1.1

OPERATING SPECIFICATIONS

- LINE VOLTAGE/CURRENT:
- 3 AMP., 120/250 VAC
- 3 AMP./40°C, 250 VAC
- 50-60Hz
- 40°C
- LINE FREQUENCY:
- MAX. CASE RISE & RATED CURRENT,
- MAX. LEAKAGE CURRENT, EACH
- LINE TO GROUND
- OPERATING AMBIENT TEMP. RANGE:
- 10°C TO +40°C @ RATED CURRENT, I_r

IN AN AMBIENT, I_o, HIGHER THAN 40°C, THE MAXIMUM OPERATING CURRENT, I_o, IS AS FOLLOWS:

$$I_o = I_r \sqrt{\frac{85 - I_o}{45}}$$

RELIABILITY SPECIFICATIONS

- STORAGE TEMPERATURE:
- 40°C TO +85°C
- HUMIDITY:
- 21 DAYS @ 40°C 95% RH
- CURRENT OVERLOAD TEST:
- 6 TIMES RATED CURRENT FOR 8 SECONDS

TEST SPECIFICATIONS

- INDUCTANCE:
- 7.05 mH NOMINAL
- CAPACITANCE, (MEASURED @ 1 KHz, 0.25 VAC MAX., 25°C ±1°C)
- LINE TO GROUND:
- .006µF ±20%
- LINE TO LINE:
- .54µF ±20%
- DISCHARGE RESISTOR
- 330 KΩ
- LINE/GROUND AND LINE/LINE
- INSULATION RESISTANCE
- 6000 MΩ (MIN) AT 100 VDC
- 20°C AND 50% RH

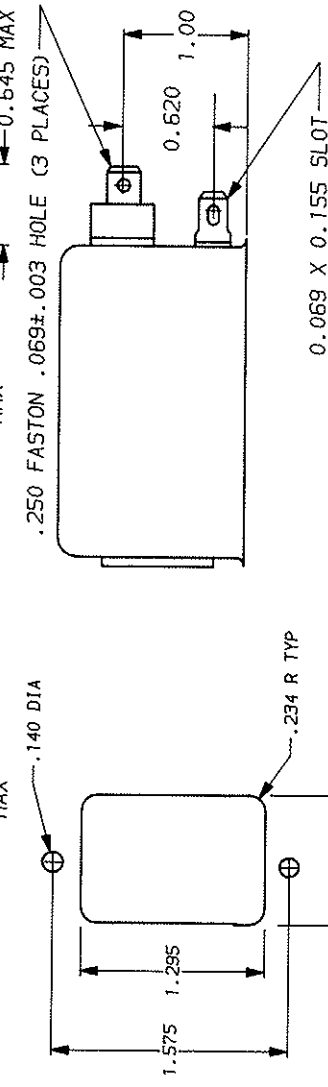
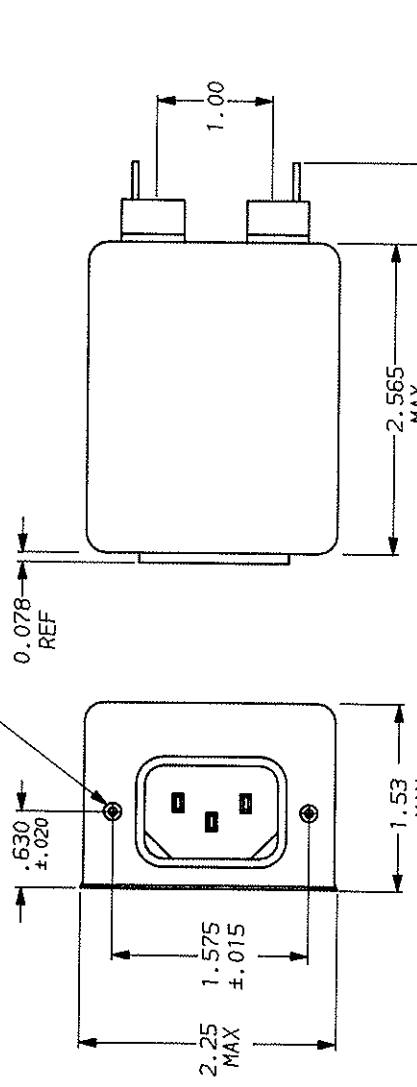
RECOMMENDED RECEIVING INSPECTION HIPOT.

- LINES TO GROUND:
- 2250 VDC FOR 1 MINUTE
- LINE TO LINE:
- 1450 VDC FOR 1 MINUTE

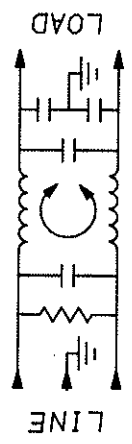
FILTER APPROVAL:

THE BEST WAY TO SELECT AND QUALIFY A FILTER IS FOR YOUR ENGINEERING TO TEST THE UNIT IN YOUR EQUIPMENT.

#6-32 X .25 INSERT
OR M3 X .5 (Z)



PANEL CUTOFF
TOLERANCE ±.005



50Ω - 50Ω (MINIMUM) INSERTION LOSS	
FREQUENCY MHZ	.01 .02 .05 .08 .1 .15 .5 1 5 10 20 30
COMMON dB	5 10 19 25 27 30 48 40 36 36 36 36
DIFF. dB	1 1 2 3 10 25 59 62 40 40 40 40

This document is proprietary to CORCOM INC. and is not to be reproduced nor used for manufacturing purposes except on CORCOM's order or prior written consent.



LIBERTYVILLE, IL 60048

POWER LINE FILTER

SCALE	DATE	DRG. NO.	REV.
NTS	9-12-89	3ESK7	6
APP. BY	DESIGNER	CHK	
TDL			