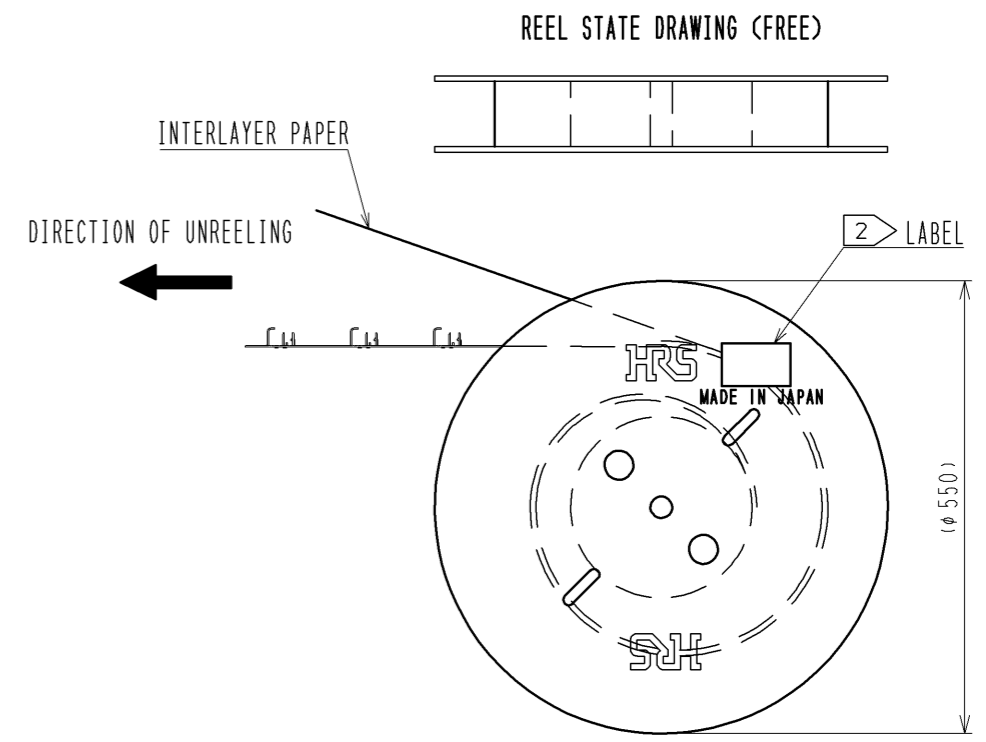
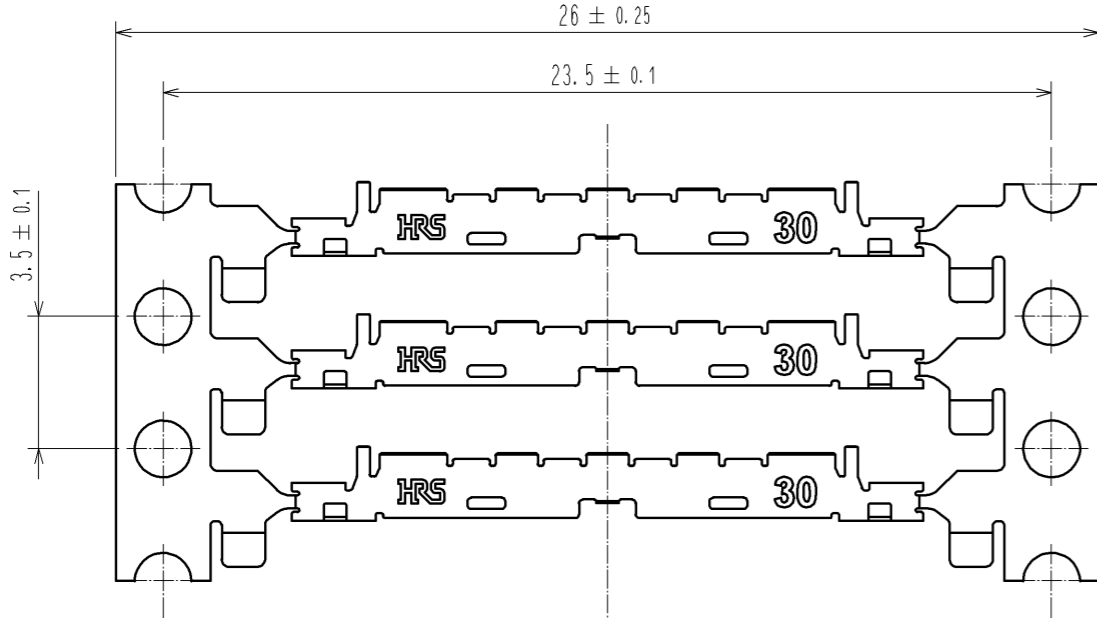


CAREER STATE DRAWING



NOTES

- 1. PER REEL:1,000 COMPONENTS
- 2 THE DETAILS OF THE LABEL ARE SHOWN BELOW.
- 3 THE ASSEMBLY IS COMPLETED BY COMBINING THREE PARTS 'CONNECTOR UNIT, METAL SHIELDING' AND 'LATCH'. REFER TO THE TABLE FOR EACH ITEM No. PART NAME, PART No AND CODE No.
- 4. DIMENSIONS IN PARENTHESES ARE FOR REFERENCE.

2 LABEL DETAILS (EXAMPLE)

HRS		INSPECTION 検査
CODE No. 品名コード	CL662-8106-0-52	
PART NO. 品名	DF81-30P-SHL(52)	
QTY 数量	1,000 PCS	
PECULIAR 仕様		
Lot No		
SPLICE 継ぎ目		

3

ITEM No.	PART NAME	PART No.	CODE No.
-	CONNECTOR UNIT	DF81D-30P-0.4SD(52)	CL662-8119-2-52
1	METAL SHIELDING	DF81-30P-SHL(52)	CL662-8106-0-52
-	LATCH	DF81-30P-LCH(52)	CL662-8107-3-52

NO.		MATERIAL	FINISH . REMARKS	NO.	MATERIAL	FINISH . REMARKS
UNITS mm			SCALE 5 : 1	COUNT	DESIGNED	CHECKED
HRS HIROSE ELECTRIC CO., LTD.		APPROVED : MH. YAMANE	13.11.26	DRAWING NO. EDC3-340820-02		
		CHECED : MH. TSUCHIDA	13.11.25	PART NO. DF81-30P-SHL(52)		
		DESIGNED : AH. MIYAZAKI	13.11.12	CODE NO. CL662-8106-0-52		
		DRAWN : AH. MIYAZAKI	13.11.12			

CONTACT AREA : Au PLATING 0.05 μm MIN.
SOLDERING AREA : Au PLATING 0.05 μm MIN.
UNDER PLATING : Ni PLATING 0.2 μm MIN.