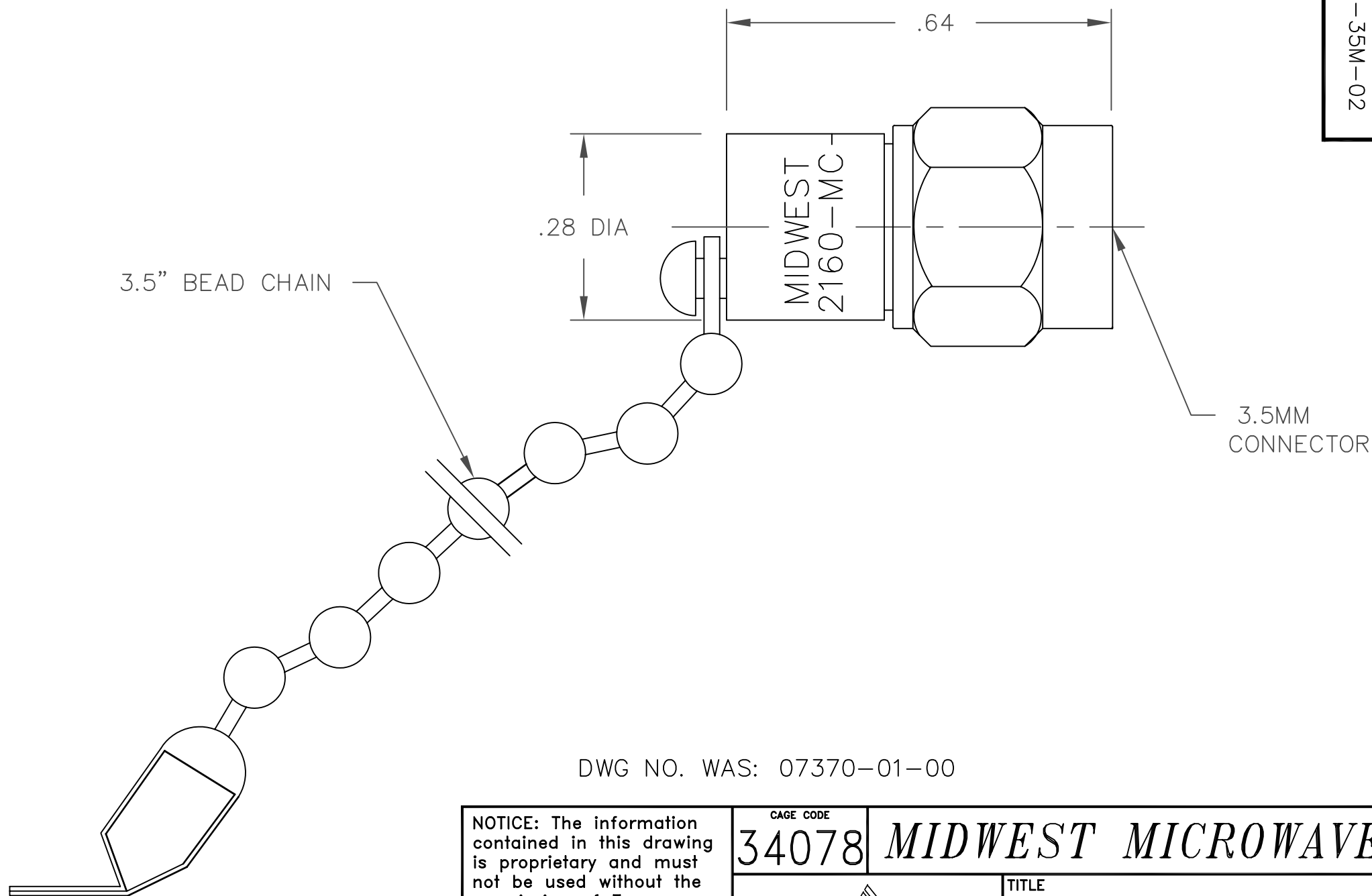


MODEL NUMBER
TRM-2160-MC-35M-02

NOTES:

- 1.0 ELECTRICAL SPECIFICATIONS:
 - 1.1 FREQUENCY RANGE:DC to 26.5 GHz
 - 1.2 MAXIMUM VSWR:
 - DC to 18.0 GHz: 1.12:1
 - 18.0 to 26.5 GHz; 1.18:1
 - 1.3 MAXIMUM INPUT POWER: 2 WATTS AT +25°C DERATED LINEARLY TO 1 WATT AT +125°C.
 - 1.4 OPERATING TEMP. RANGE:
 - 65°C to +125°C

2.0 MARKING (MARK UNIT AS SHOWN):



DWG NO. WAS: 07370-01-00

NOTICE: The information contained in this drawing is proprietary and must not be used without the permission of Emerson Network Power.		CAGE CODE 34078		MIDWEST MICROWAVE	
UNLESS OTHERWISE NOTED DIMENSIONS ARE IN INCHES AND TOLERANCES ARE: 3 PLACE DECIMALS ±.005 2 PLACE DECIMALS ±.02 FRACTIONS ±1/64 PARALLELITY: T.I.R. _____ FLATNESS: T.I.R. _____ CONCENTRICITY: T.I.R. _____ ANGLES AND PERPENDICULARITY: ±1°		 EMERSON Network Power Connectivity Solutions		TITLE TERMINATION 3.5MM PLUG OUTLINE DRAWING	
				DRAWING NUMBER TRM-2160-MC-35M-02-01	
		DRAWN/DATE A.BEATTY 8/6/92		ENG./DATE G.KOZAK 8/7/92	
		CHECKED/DATE M.HOLLMAN 8/7/92		APPROVED/DATE	
		SCALE: 5=1		SHEET 1 of 1	

REV.	DESCRIPTION	DATE
-	RELEASED	1/21/87
A	ECR 6545	8/1/89
B	ECN 11948 (NO CAD)	8/6/92
B1	ADDED TITLEBLOCK	11/9/05
C	ECO 22678	9/29/10