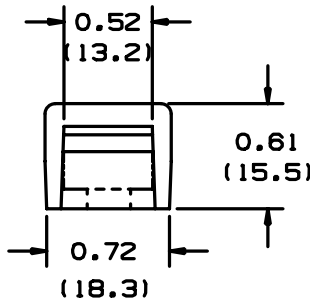
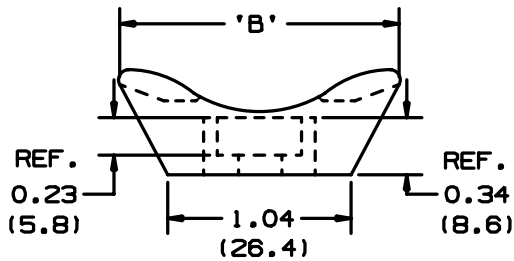
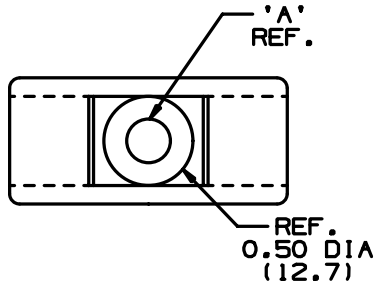


THIS COPY IS PROVIDED ON A RESTRICTED BASIS AND IS NOT TO BE USED IN ANY WAY DETRIMENTAL TO THE INTERESTS OF PANDUIT CORP.



| PANDUIT PART NUMBER* | *MATERIAL SUFFIX | 'A' DIA.   | 'B'         | MTG. SCREW | WEIGHT lbs/100 pcs (g)/100 pcs | USE WITH ANY OF THESE CABLE TIES |
|----------------------|------------------|------------|-------------|------------|--------------------------------|----------------------------------|
| TMEH-S8              | -0               | 0.18 (4.8) | 1.62 (41.1) | #8 (M4)    | 1.04 (471.4)                   | I,S,H,EH                         |
| TMEH-S10             | -0               | 0.20 (5.1) |             | #10 (M5)   | 1.03 (467.4)                   | I,S,H,EH                         |
|                      | -100<br>-109     |            | 1.65 (41.9) |            |                                |                                  |
| TMEH-S25             | -0               | 0.26 (6.6) | 1.62 (41.1) | 1/4" (M6)  | 1.01 (458.0)                   | I,S,H,EH                         |

| *MATERIAL SUFFIX | MATERIAL                        |
|------------------|---------------------------------|
| -0               | WEATHER RESISTANT NYLON         |
| -100             | WEATHER RESISTANT POLYPROPYLENE |
| -109             | POLYPROPYLENE                   |

NOTES:

- SEE CURRENT PRICE SHEET FOR PART NUMBER SUFFIX DESIGNATION FOR PACKAGE SIZE.
- CABLE TIE CROSS SECTION CODE:  
I=INTERMEDIATE,S=STANDARD  
H=HEAVY DUTY,EH=EXTRA HEAVY.

DIMENSIONS IN BRACKETS ARE METRIC [ mm ]

CAD FILENAME/LAYERS G00239EL\_PB\_TMEH\_02

**PANDUIT**

CORP. TINLEY PARK, ILLINOIS

TMEH-XX  
TIE MOUNT

| REV | DATE     | BY   | CHK | DESCRIPTION   | ECN      | R | CUST | SUP | DRWN BY | DATE     | MAT'L     | SCALE | DWG NO.  | DWG SIZE |
|-----|----------|------|-----|---|----------|---|------|-----|---------|----------|-----------|-------|----------|----------|
| 2   | 10/28/03 | MSAD |     | ADDED SEPERATE TMEH-S10 ROW FOR -100 AND -109 PARTS, 0.50 (12.7) DIA WAS .52 (13.2), 'B' WAS 1.65 (41.9) FOR -0 PARTS, 0.72 (18.3) WAS .74 (18.8) 1.04 (26.4) WAS 1.05 (26.7) | G80239EL | 2 |      |     |         |          |           |       |          |          |
| 1   | 7/24/01  | LGG  |     | ADDED REF & UPDATED   | G80239EL | 1 |      |     | AJV     |          |           | NONE  |          |          |
| R   | 12/13/98 | AJV  |     | INITIAL RELEASE   | G80239EL | R |      |     |         | 12/13/98 | SEE TABLE |       |          |          |
|     |          |      |     |   |          |   |      |     |         |          |           |       | G80239EL | A        |

UNLESS OTHERWISE SPECIFIED, DIMENSIONAL TOLERANCES ARE:  
(.X) ±0.05 (1.3) (.XXX) ±0.010 (0.25)  
(.XX) ±0.02 (0.5) ANGLES ± 5°

UNLESS OTHERWISE SPECIFIED, ALL DIMENSIONS ARE GIVEN IN INCHES, THIRD ANGLE PROJECTION.

DRWN BY

MAT'L

SCALE

DATE

12/13/98

CHK'D

SEE TABLE

DWG NO.

G80239EL

DWG

A  
SIZE